

Cable Management Systems

AC 1053

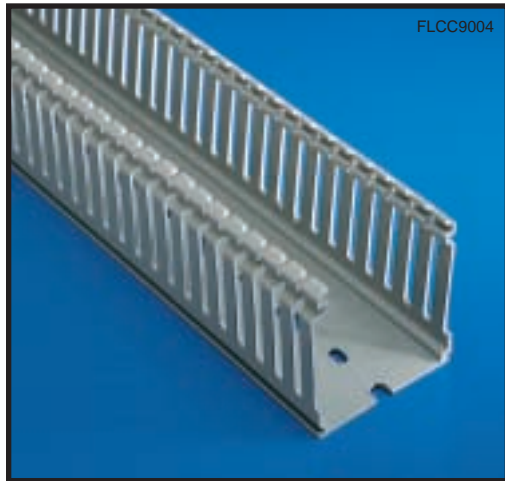


ABB Control

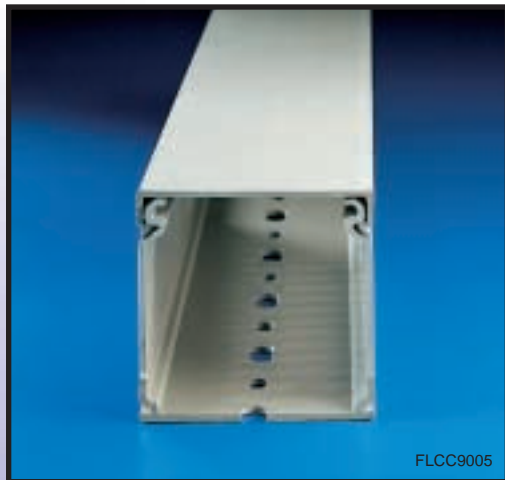


Thermoplastic wiring ducts

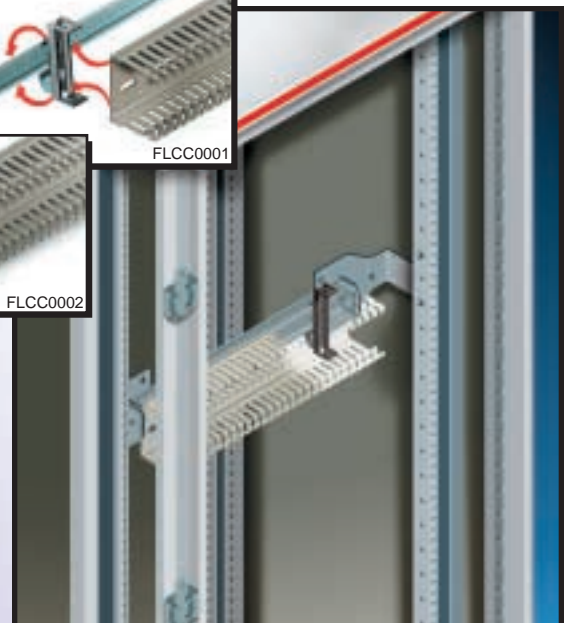
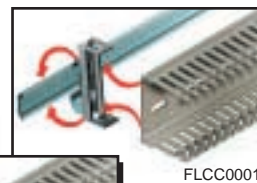
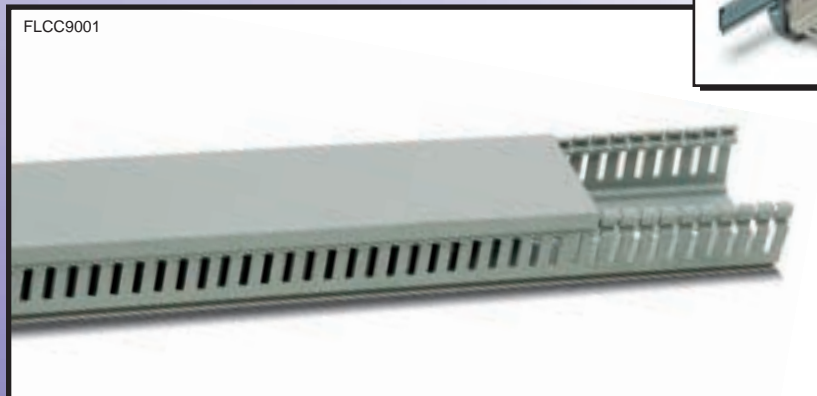
with vertical slots



Less complicated work brings installers and panel builders faster solutions thanks to the new profile of the ribs.

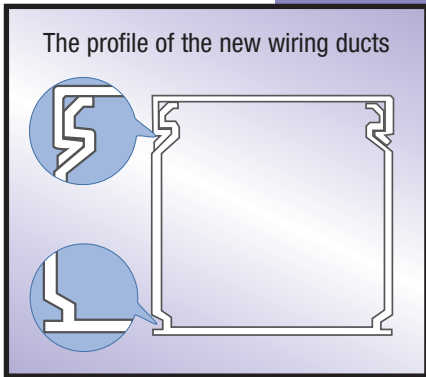


All the space cables need with the new wiring ducts available in the 100 mm height and six different base sizes.



The top profile of the ribs of these wiring ducts has been redesigned to make it easier to open and close the cover and to ensure even more secure engagement. Gentle pressure is all it takes to mount the cover on the duct thanks to the controlled splaying of the sides. A perfect seal is formed in all conditions, even in environments that reach high temperatures. To release it, simply press the ribs inwards with one hand. The cover can't slide in vertical sections, nor is the bottom rib affected by the weight of the cables in horizontal sections. The exceptional care with which ABB wiring ducts are manufactured also ensures a clean internal finish. Because there aren't any plastic burrs, you can work hour after hour without your hands suffering the consequences.

The dimensions and resilience of the ribs on ABB wiring ducts ensure they can be moved apart many times during the wiring phase. When you need to remove a rib to create openings for cables, the special knockouts allow you to make an instant clean break. The base of the wall also features knockouts that make it possible to cut the edge when you want to make level branch connections. The 80 and 100mm high versions feature cable holder moldings in the middle of the straight sections of the ribs. The new ABB wiring ducts are in a class of their own when it comes to ease of installation. In fact, they have been designed for snap-on installation to a new accessory that's been specially designed for fast mounting both to DIN rails and base plates. Thanks to this new accessory, the new bottom profile of the wiring ducts has been changed and no longer needs drilling or rivets; mounting and removal both take no more than a click.



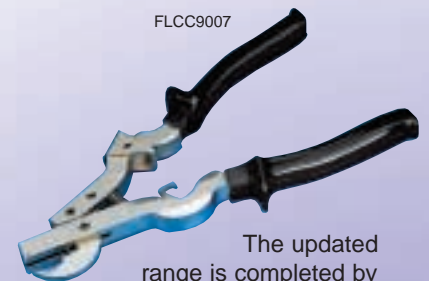
The ABB range of cable management systems is designed for applications with rated voltages up to 1000 VDC and 1500 VAC. It offers 28 different combinations with bases of 15, 25, 40, 60, 80, 100, 120 & 150mm and heights of 17, 30, 40, 60, 80 & 100mm. All are available with 8-12mm and 4-6mm slots. The snap-on base for DIN rails or base plates is

available for all bases between 25 and 150mm. The ribbed ducts are made of self-extinguishing thermo-plastic that complies with UL stan-

dard 94 V-0 and is resistant to abnormal heat and fire up to 960°C (glow-wire test) in accordance with IEC standard 695-2-1. Dimensional stability is guaranteed between -20°C and +60°C. The standard length of the ducts is 2 m, and the color is RAL 7030 grey. The whole range is IMQ marked and UL, CSA and RINA approved.



FLCC9011



FLCC9007

The updated range is completed by installation accessories and tools: plastic, rivets, wire stops, label tags, new wiring ducts bases, a new rivet gun and shears.



FLCC9009

Wiring duct, grey

8 – 12mm slot, 4 – 6mm slot

8 – 12mm slot

Dimensions		Meters per package	pieces per package	Weight kg / m	Part number ^{①②}	List price per package	List price per meter
W x H mm	W x H in						
15 x 17	0.53 x 0.67	92	46	0.06	05019	\$ 874.00	\$ 9.50
25 x 30	0.98 x 1.18	116	58	0.21	05033	1769.00	15.25
40 x 30	1.57 x 1.18	80	40	0.27	05035	1472.00	18.40
60 x 30	2.36 x 1.18	52	26	0.38	05037	1110.20	21.35
25 x 40	0.98 x 1.57	96	48	0.25	05043	1704.00	17.75
40 x 40	1.57 x 1.57	60	30	0.31	05045	1182.00	19.70
60 x 40	2.36 x 1.57	40	20	0.46	05047	900.00	22.50
80 x 40	3.15 x 1.57	32	16	0.47	05049	920.00	28.75
100 x 40	3.94 x 1.57	24	12	0.55	05051	728.40	30.35
120 x 40	4.72 x 1.57	20	10	0.65	05053	614.00	30.70
25 x 60	0.98 x 2.36	68	34	0.24	05063	1281.80	18.85
40 x 60	1.57 x 2.36	44	22	0.34	05065	974.60	22.55
60 x 60	2.36 x 2.36	32	16	0.47	05067	940.80	29.40
80 x 60	3.15 x 2.36	24	12	0.52	05069	738.00	30.75
100 x 60	3.94 x 2.36	20	10	0.59	05071	653.00	32.65
120 x 60	4.72 x 2.36	14	7	0.73	05073	549.50	39.25
25 x 80	0.98 x 3.15	56	28	0.29	05083	1324.40	23.65
40 x 80	1.57 x 3.15	36	18	0.38	05085	927.00	25.75
60 x 80	2.36 x 3.15	24	12	0.50	05087	740.40	30.85
80 x 80	3.15 x 3.15	16	8	0.59	05089	538.40	33.65
100 x 80	3.94 x 3.15	16	8	0.68	05091	614.40	38.40
120 x 80	4.72 x 3.15	12	6	0.89	05093	598.20	49.25
25 x 100	0.98 x 3.94	40	20	0.38	05094	1122.00	28.05
40 x 100	1.57 x 3.94	28	14	0.55	05095	841.40	30.75
60 x 100	2.36 x 3.94	20	10	0.59	05096	655.00	32.75
80 x 100	3.15 x 3.94	14	7	0.68	05097	549.50	39.25
100x 100	3.94 x 3.94	8	4	0.89	05098	396.90	49.55
150 x 100	5.91 x 3.94	8	4	1.30	05099	528.00	66.00

4 – 6mm slot

Dimensions		Meters per package	pieces per package	Weight kg / m	Part number ^{①②}	List price per package	List price per meter
W x H mm	W x H in						
15 x 17	0.53 x 0.67	92	46	0.06	05119	\$ 874.00	\$ 9.50
25 x 30	0.98 x 1.18	116	58	0.21	05133	1769.00	15.25
40 x 30	1.57 x 1.18	80	40	0.27	05135	1472.00	18.40
60 x 30	2.36 x 1.18	52	26	0.38	05137	1110.20	21.35
25 x 40	0.98 x 1.57	96	48	0.25	05143	1704.00	17.75
40 x 40	1.57 x 1.57	60	30	0.31	05145	1182.00	19.70
60 x 40	2.36 x 1.57	40	20	0.46	05147	900.00	22.50
80 x 40	3.15 x 1.57	32	16	0.47	05149	920.00	28.75
100 x 40	3.94 x 1.57	24	12	0.55	05151	728.40	30.35
120 x 40	4.72 x 1.57	20	10	0.65	05153	614.00	30.70
25 x 60	0.98 x 2.36	68	34	0.24	05163	1281.80	18.85
40 x 60	1.57 x 2.36	44	22	0.34	05165	974.60	22.55
60 x 60	2.36 x 2.36	32	16	0.47	05167	940.80	29.40
80 x 60	3.15 x 2.36	24	12	0.52	05169	738.00	30.75
100 x 60	3.94 x 2.36	20	10	0.59	05171	653.00	32.65
120 x 60	4.72 x 2.36	14	7	0.73	05173	549.50	39.25
25 x 80	0.98 x 3.15	56	28	0.29	05183	1324.40	23.65
40 x 80	1.57 x 3.15	36	18	0.38	05185	927.00	25.75
60 x 80	2.36 x 3.15	24	12	0.50	05187	740.40	30.85
80 x 80	3.15 x 3.15	16	8	0.59	05189	538.40	33.65
100 x 80	3.94 x 3.15	16	8	0.68	05191	614.40	38.40
120 x 80	4.72 x 3.15	12	6	0.89	05193	598.20	49.25
25 x 100	0.98 x 3.94	40	20	0.38	05194	1122.00	28.05
40 x 100	1.57 x 3.94	28	14	0.55	05195	841.40	30.75
60 x 100	2.36 x 3.94	20	10	0.59	05196	655.00	32.75
80 x 100	3.15 x 3.94	14	7	0.68	05197	549.50	39.25
100x 100	3.94 x 3.94	8	4	0.89	05198	396.90	49.55
150 x 100	5.91 x 3.94	8	4	1.30	05199	528.00	66.00

① Sold in package quantity only. Order quantity must equal quantity shown in «meters per package» column.

② Wire duct cover included.

Wiring duct accessories for 8 – 12mm slot & 4 – 6mm slot



Wiring duct covers

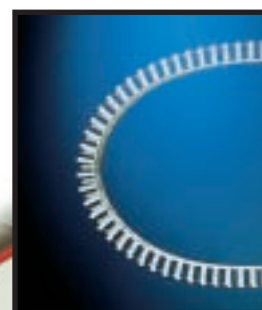
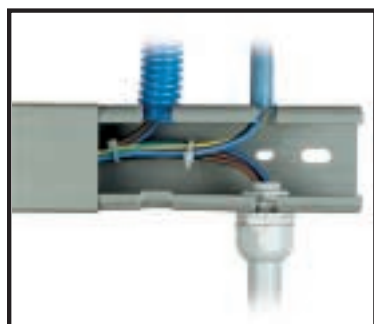
Dimensions Width mm	Color	Meters per package	Pieces per package	Part ① number	List price per package	List price per meter
15	Grey	200	100	05300	\$ 570.00	\$ 2.85
25	Grey	60	30	05302	231.00	3.85
40	Grey	40	20	05304	272.00	6.80
60	Grey	24	12	05306	249.60	10.40
80	Grey	16	8	05308	258.40	16.15
100	Grey	48	24	05310	904.80	18.85
120	Grey	36	18	05312	966.60	26.85
150	Grey	28	14	05314	1001.00	35.75

Accessories

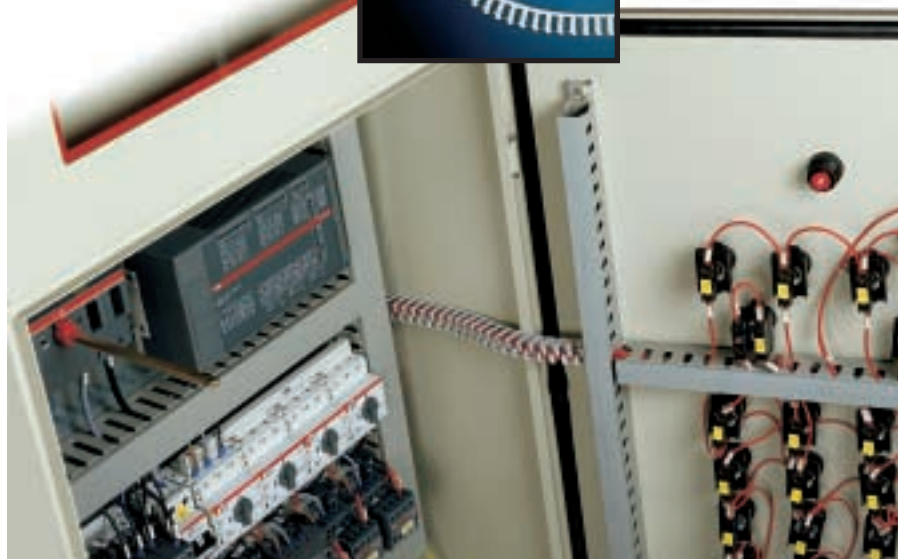
Item	Pieces per packages	Part ① number	List price per package
Rivet, 4mm	100	05214	\$ 55.00
Rivet, 6mm	100	05216	75.00
Plastic wire stops for 8 – 12mm slot 40mm bases	100	05224	210.00
Plastic wire stops for 8 – 12mm slot 60mm bases	100	05226	265.00
Plastic wire stops for 8 – 12mm slot 80mm bases	100	05228	310.00
Plastic wire stops for 8 – 12mm slot 100mm bases	100	05230	440.00
Plastic label for 8 – 12mm slot	100	05240	500.00
Quick mounting device for 25mm base	20	05250	112.25
Quick mounting device for 40mm base	20	05252	115.55
Quick mounting device for 60mm base	20	05254	121.60
Quick mounting device for 80mm base	20	05256	126.15
Quick mounting device for 100mm base	20	05258	126.85
Quick mounting device for 120mm base	20	05260	127.60
Quick mounting device for 150mm base	20	05262	133.65
Trunking shears	1	05265	495.00
Rivet gun	1	05266	450.00

① Sold in package quantity only. Order quantity must equal quantity shown in «meter or pieces per package»

Other products available from the cable management system family



Flexible thermoplastic wiring ducts solve every electrical switchboard and distribution switchboard wiring problem.



Wiring duct technical data

Resistance to chemical agents

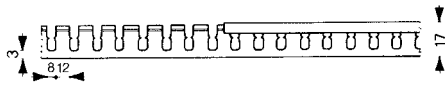
Chemical	Concentration	Temp. °C	Resistance
Acetic acid, hydrous	10%	50	①
Acetic acid'	60%	50	①
Acetone	Traces	20	②
Acetone	100%	20	②
Acqua regia		20	①
Ammonia concentrate	88%	50	①
Ammonia, dry gas	100%	50	①
Ammonia, liquid	100%	20	③
Aniline, pure	100%	20	②
Arsenic acid, hydrous	concentrated	20	①
Barium hydroxide, hydr.	—	50	①
Beer	commercial	20	①
Benzene	—	20	②
Benzoic acid	—	20	③
Borax, hydrous	thinned	50	①
Boric acid, hydrous	thinned	50	①
Brandy	commercial	20	①
Bromide liquid	—	20	②
Butane gaseous	—	20	①
Butadiene	50%	50	①
Butanol	—	20	①
Butyric acid, hydrous	20%	20	①
Calcium chloride	—	50	①
Camphor oil	—	20	①
Carbon tetrachloride	—	20	③
Chlorine gaseous, dry	100%	20	①
Chlorine gaseous, moist	20%	20	③
Chlorine water	saturated	20	③
Chromic acid, hydrous	—	50	①
Citric acid, hydrous	—	50	①
Copper sulphate, hydrous	thinned	50	①
Diesel oil	—	20	①
Ethyl-alcohol	100% (in water)	20	①
Formaldehyde, hydrous	40%	50	①

Chemical	Concentration	Temp. °C	Resistance
Formic acid	100%	20	①
Freon 12	—	20	①
Gasoline	—	50	①
Glycerine, hydrous	—	50	①
Hydrochloric acid	saturated	50	①
Hydrogen	—	50	①
Linseed oil	—	50	①
Lubricating oils	—	50	①
Mineral oil	—	50	①
Molasses	—	20	④
Oils and fats	commercial	50	①
Oil of turpentine	commercial	20	①
Ozone	—	20	①
Paraffin wax	—	50	①
Photographic developer	commercial	50	①
Photographic emulsions	—	50	①
Potassium permanganate	6%	20	①
Propane, liquid	—	20	①
Salicylic acid	—	50	①
Sea water	—	50	①
Soda, hydrous	saturated	50	①
Sodium chloride	thinned	50	①
Spirits, all types	—	20	①
Sulphur	—	50	①
Sulphuric acid, hydrous	40%	50	①
Tannic acid	—	50	①
Tetrahydrofuran	—	20	②
Toluene	—	20	②
Urea, hydrous	—	50	①
Urine	—	50	①
Vinegar	commercial	50	①
Water	—	50	①
Wines, red & white	commercial	20	①
Zinc sulphate, hydrous	thinned	50	①

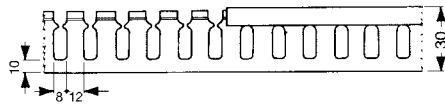
- ① Resistant
- ② Not sufficiently resistant
- ③ Resistant in certain conditions
- ④ Resistance to this product has been determined from the resistance to chemical products of similar composition

Wiring duct Approximate dimensions

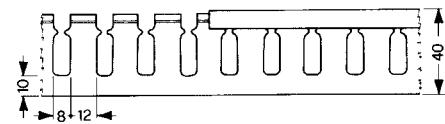
8 – 12mm slot
17mm height



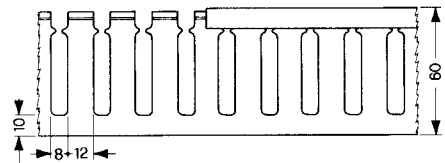
30mm height



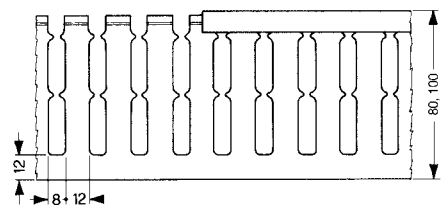
40mm height



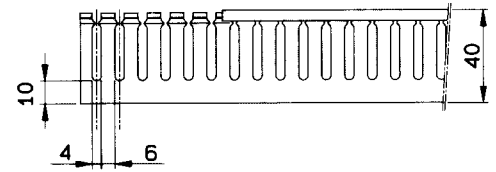
60mm height



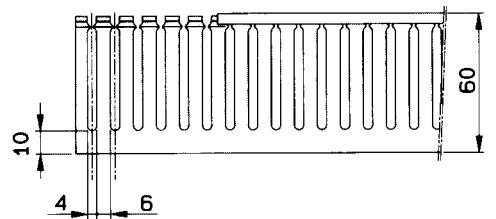
80/100mm height



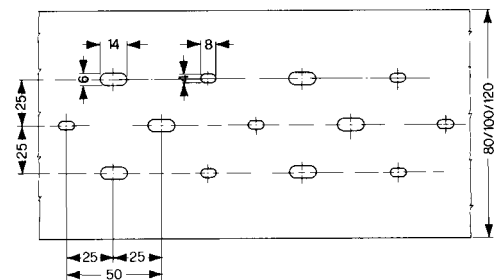
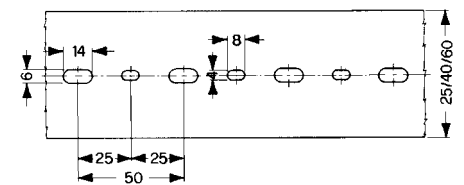
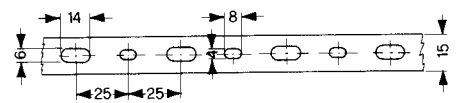
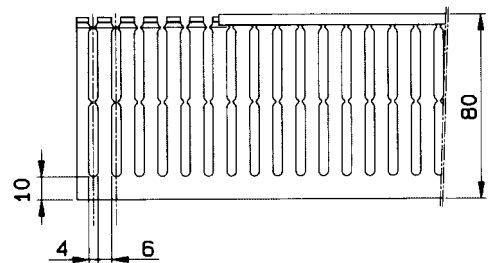
4 – 6mm slot
40mm height



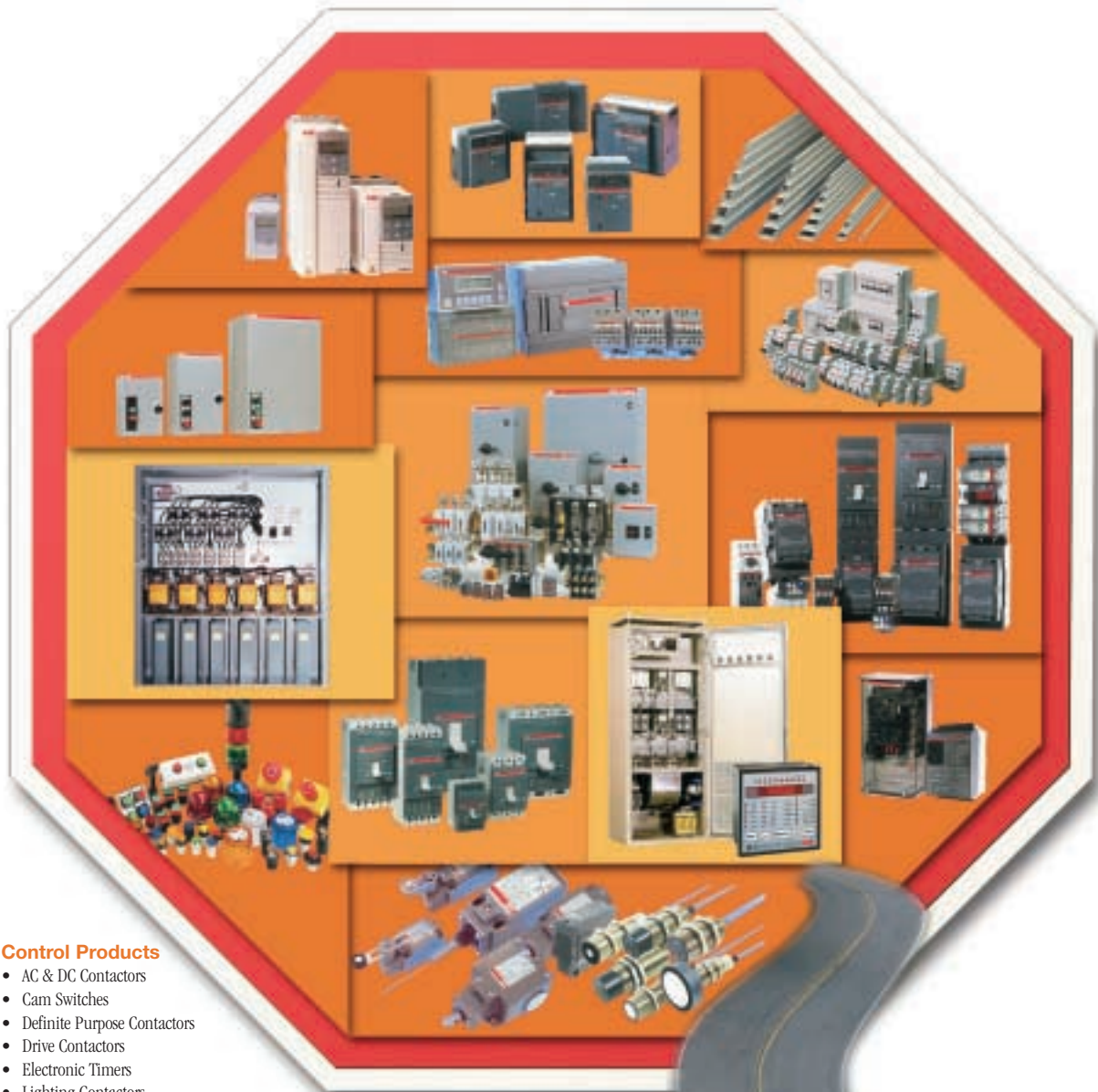
60mm height



80/100mm height



The One Stop Shop



Control Products

- AC & DC Contactors
- Cam Switches
- Definite Purpose Contactors
- Drive Contactors
- Electronic Timers
- Lighting Contactors
- Limit Switches
- Magnetic Starters
- Manual Motor Starters
- PLC
- Proximity Switches, Photoelectric & Ultrasonic Sensors
- Pushbuttons, Stacklights and Beacons
- Relays
- Safety and Monitoring Relays
- Soft Starters
- Wiring Ducts

Circuit Protective Devices

- Arc Guard Monitor
- Disconnect Switches
- Low Voltage Power Circuit Breakers
- Molded Case Circuit Breakers
- Supplementary Protectors

Power Quality Products

- Active Filter
- Anti-Resonance Capacitor Banks
- Automatic Capacitor Banks
- Dynacomp
- Fixed Capacitor Banks
- Harmonic Filter (shunt)
- Individual Capacitors
- Surge Capacitors

ABB

ABB Control
3299 J.B. Deschamps
Lachine, QC H8T 3E4
Tel.: (514) 420-3100
Fax: (514) 420-3137
website: www.abb.com

AC1053 - June 2001

